



# PetaBencana.id

Bersama Kurangi Risiko

UrbanRISKLab



Humanitarian  
OpenStreetMap  
Team





Jakarta, 2013





Broken Canal Wall







79 Million

People using Social Media  
in Indonesia

2016



A photograph of a woman with long dark hair, wearing a red and blue geometric patterned shirt, looking down at a smartphone. In the foreground, the back of a woman's head wearing a yellow headscarf with a black pattern is visible. The background is slightly blurred, showing other people in a group setting.

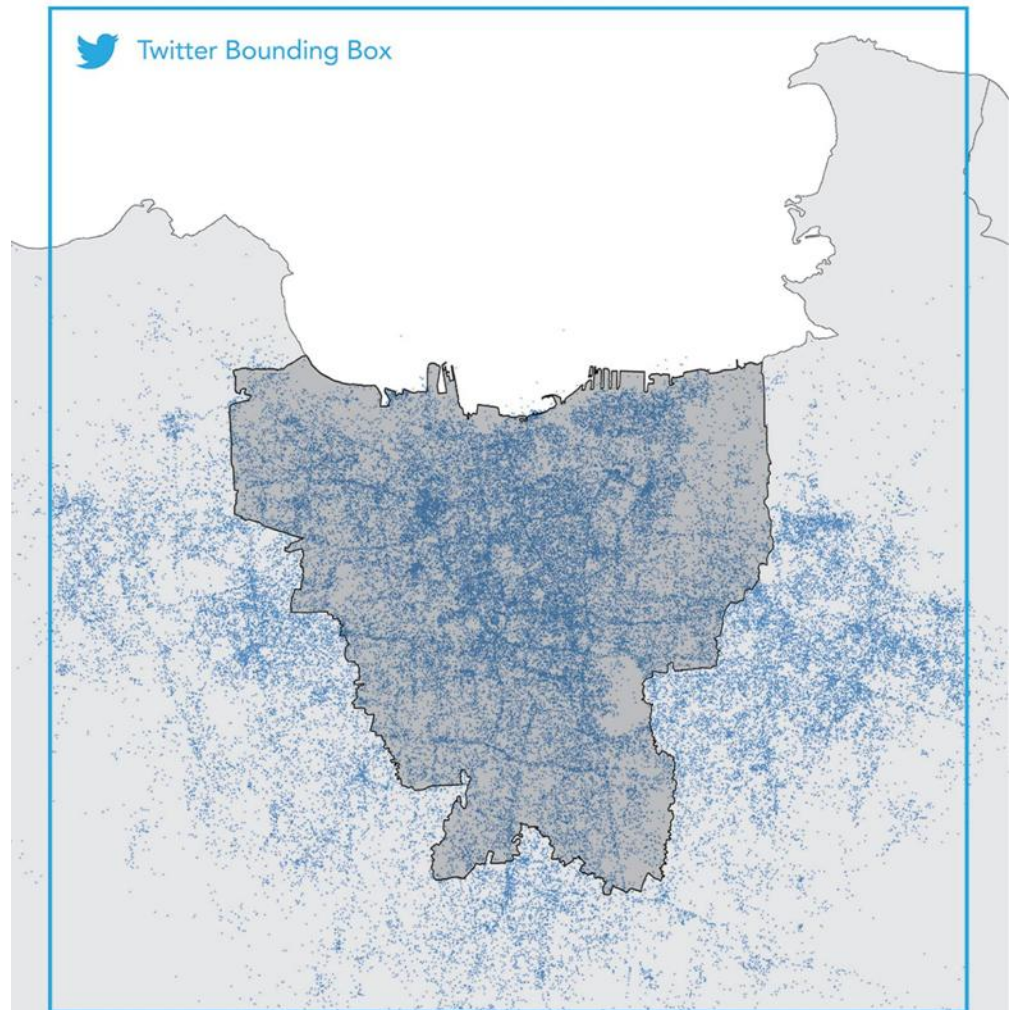
66 Million

Accessing Social Media  
Using Mobile Devices  
2016



ASEAN is home to  
**625 Million**  
People  
**725 Million**  
Smartphones









**Jakarta**

**32 Million**



**Surabaya**

**10 Million**



**Bandung**

**9 Million People**



**Next city?**



Tweet #banjir @petabencana  
and submit your report through the link provided



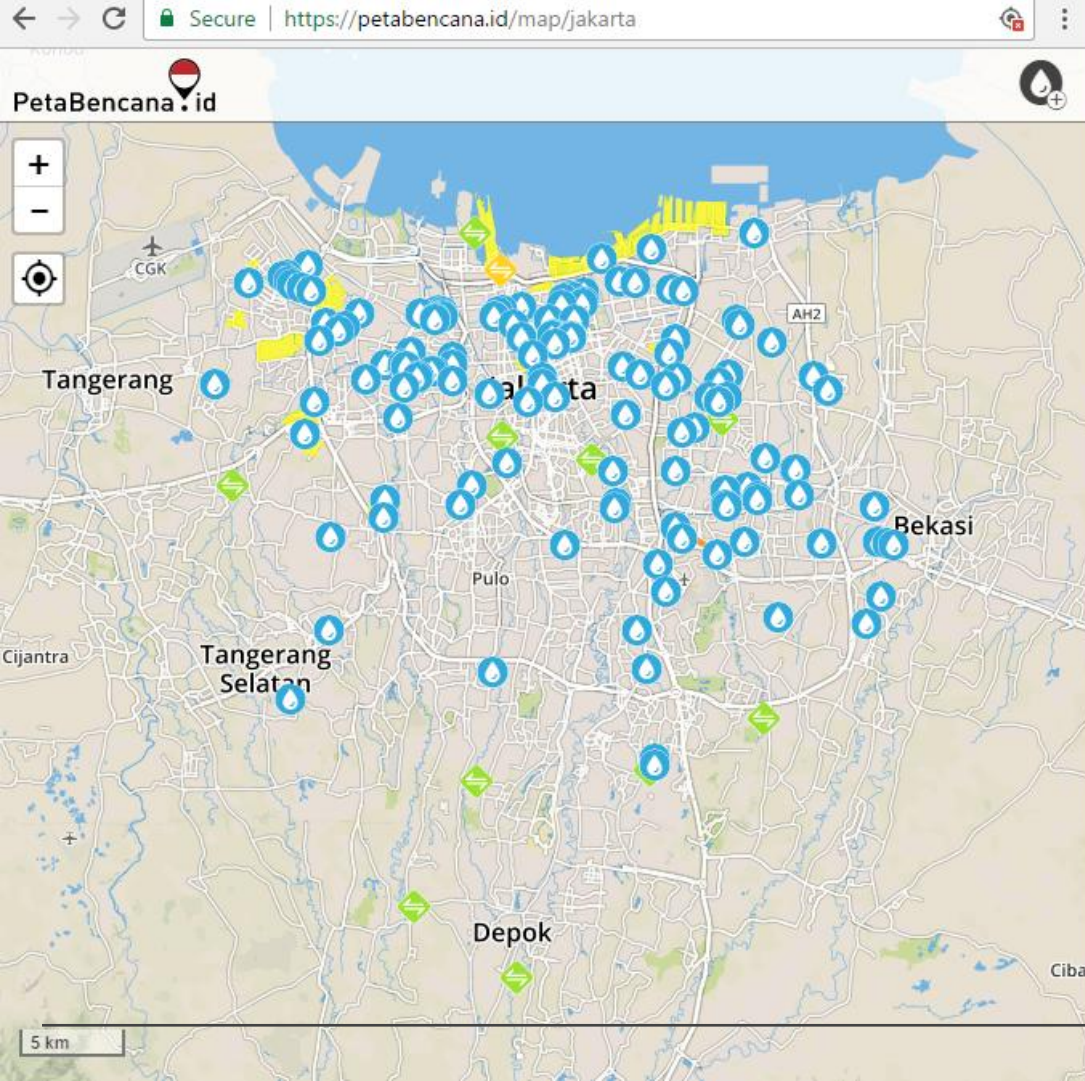
Send Telegram message /banjir to @bencanabot  
and submit your report through the link provided



<http://www.petabencana.id/>

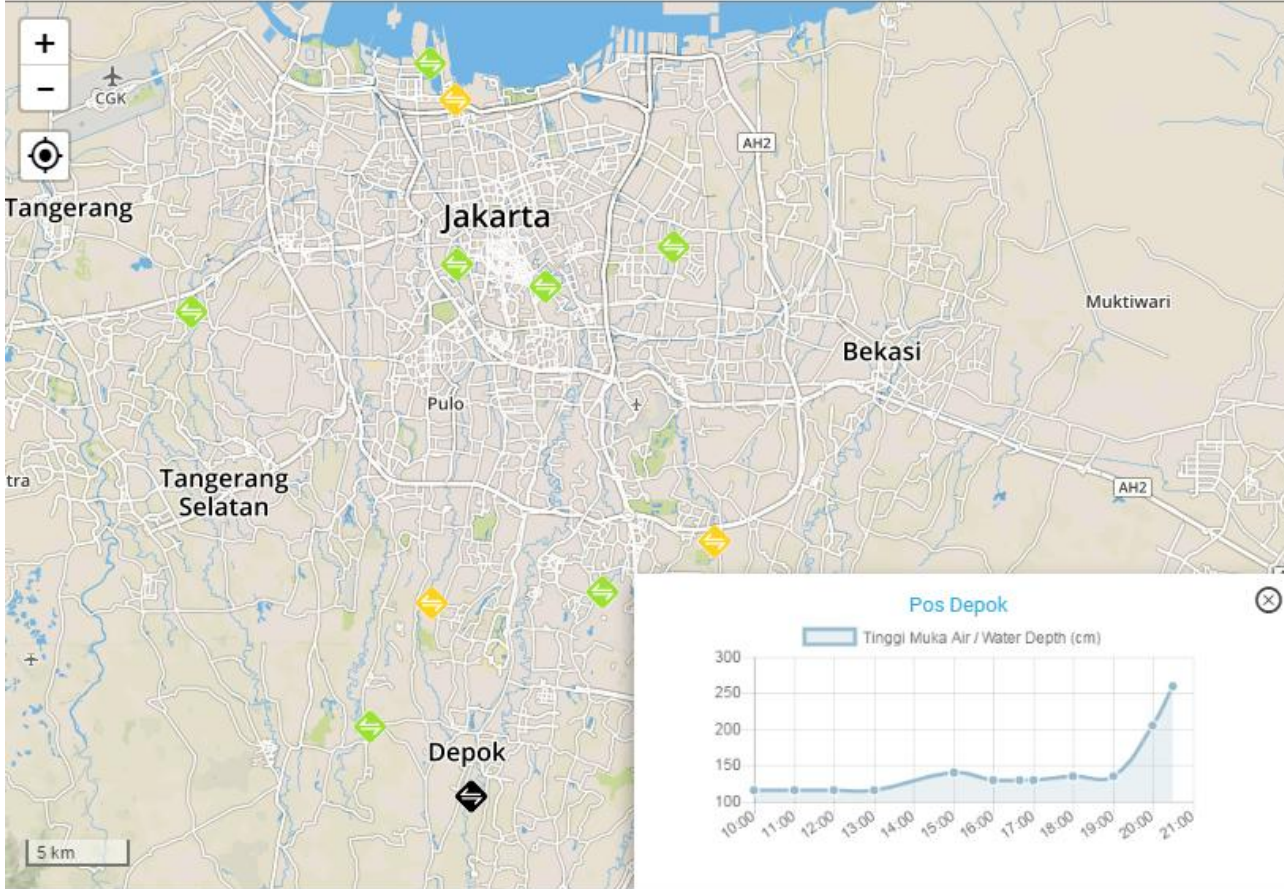
How to Report Video: <https://youtu.be/EfjRa9sF89Y>





Jabodetabek flood  
21-22 February 2017

*1061 reports received  
in 24 hours. The  
website accessed by  
more than 256.000  
unique users.*



Critical infrastructure data shown in real-time alongside flood reports

### Legenda

Tinggi Muka Air

Tinggi Banjir (cm)

Siaga 1

> 150

Siaga 2

71 - 150

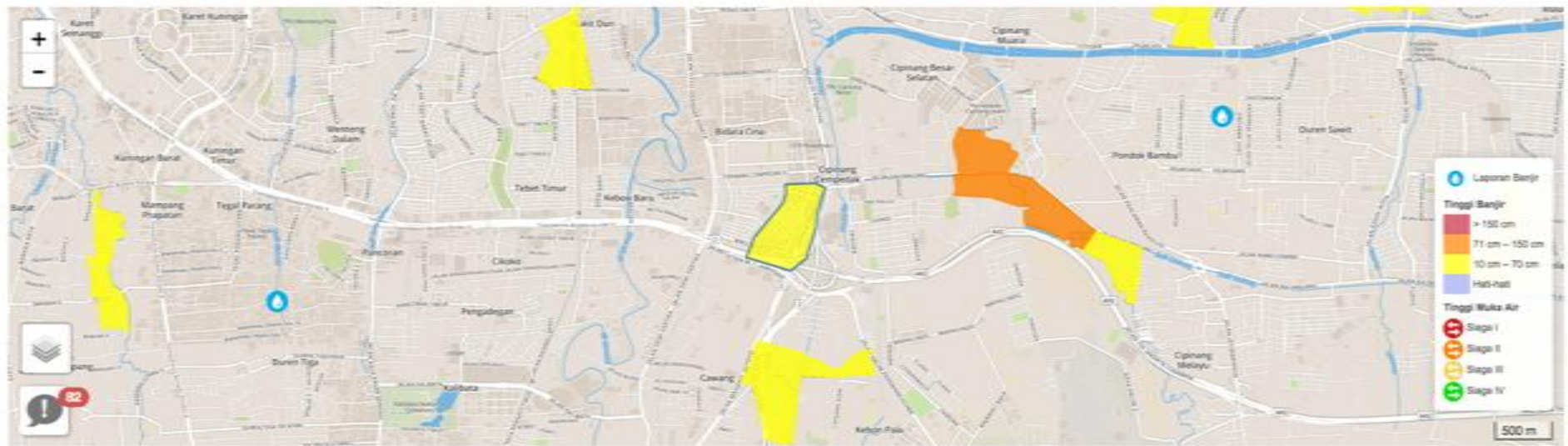
Siaga 3

10 - 70

Siaga 4

Hati-Hati



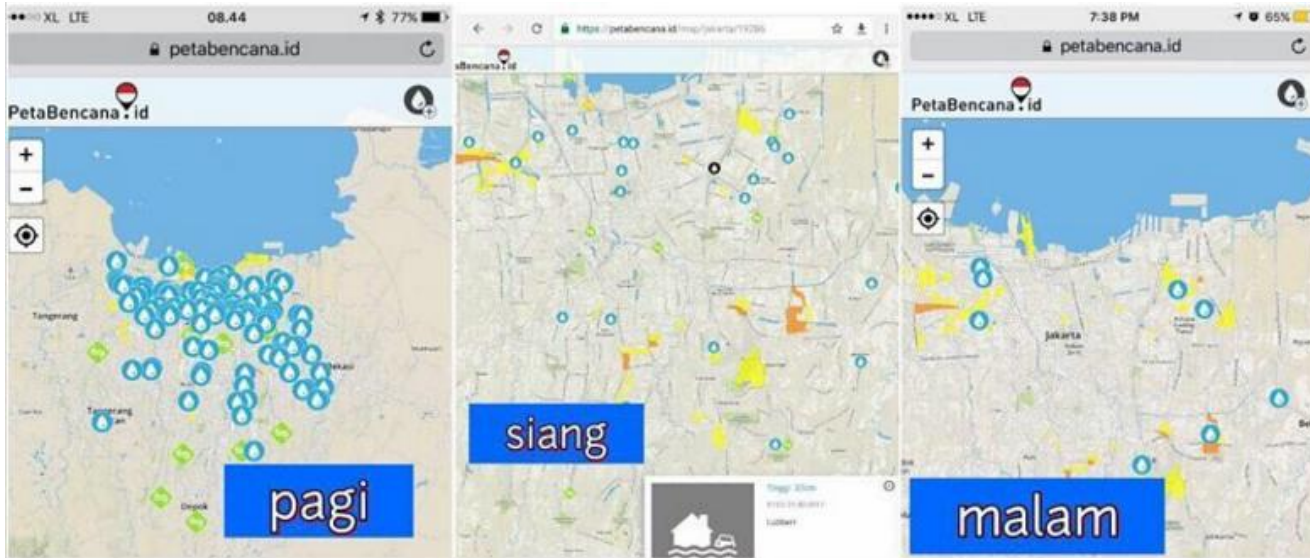


CIPINANG CEMPEDAK

Perbarui semua banjir Hapus Semua Banjir

ID	Nama	Geom ID	Laporan	Tindakan
1769	RW 11	3172060002011000	0	10 cm - 70 cm

**Risk Evaluation Matrix** - interface for Command Center (Pusdalops) to share verified flood heights in RW scale



66.5k likes 4,583 comments

Warga Jakarta harap waspada titik2 banjir. Petugas sudah tangani dengan baik. Mohon maaf kalau kemarin wkt saya koordinasi jd terbelah karena masih harus sambil jalani sidang. Titik lokasi banjir bisa cek di petabencana.id Berikut gambar titik banjir kemarin dari pagi siang dan malam. Kerja keras Pasukan Biru, PPSU dan warga.

Sumber: Instagram @basukibtp

Flood map functions as decision making support in disaster situation





Secure | <https://docs.petabencana.id/routes/>

Content Types

Examples

API

cards

cities

Feeds

Flood Gauges

Floods

Infrastructure

## Data API

The Petabencana Data API provides a number of endpoints for interacting with the system. These are summarised below, full details of the endpoints together with worked examples can be found in the pages that follow.

### Summary of Endpoints

This repository

Pull requests Issues Gist

smart-facility / cognicity

Watch 7 Star 7 Fork 2

Code Issues 3 Pull requests 0 Projects 0 Wiki Pulse Graphs

Operating in open data environment: open API available for further use of data (e.g. **feedback for evaluation of predictive model**, Damage and Loss Assessment, future planning)

**Software** and base map available in open source for further use.

An Open Source GeoSocial Intelligence Framework

28 commits

2 branches

0 releases

3 contributors

Branch: gh-pages

New pull request

Create new file Upload files Find file Clone or download

matthewberryman Reference <https://petajakarta.org/> Latest commit 6b0e67d on Nov 4, 2015

.tmp Release 0.9.0 3 years ago